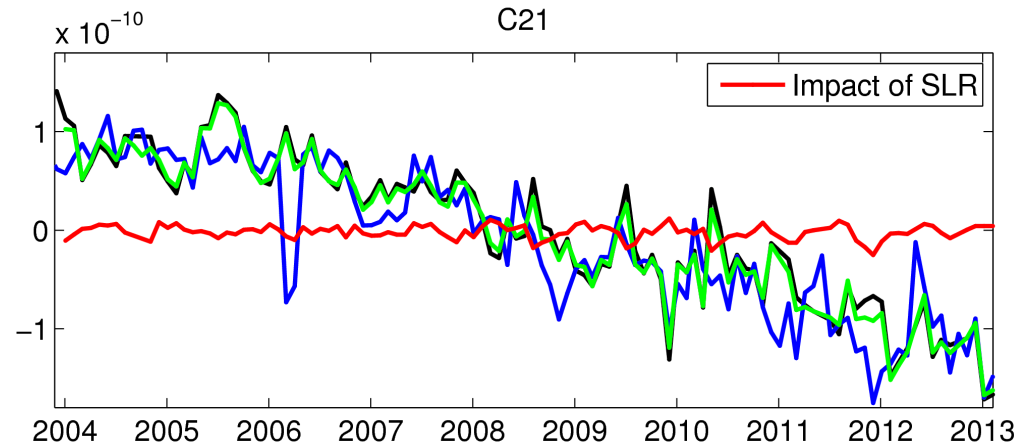
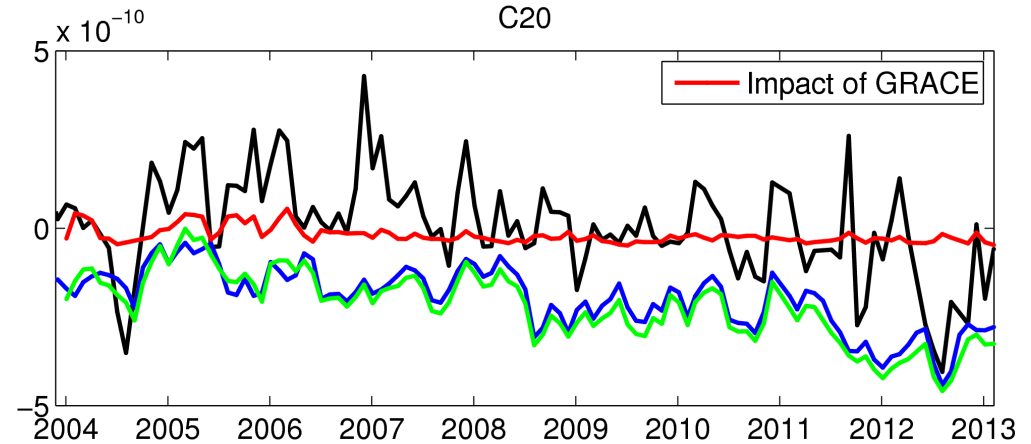
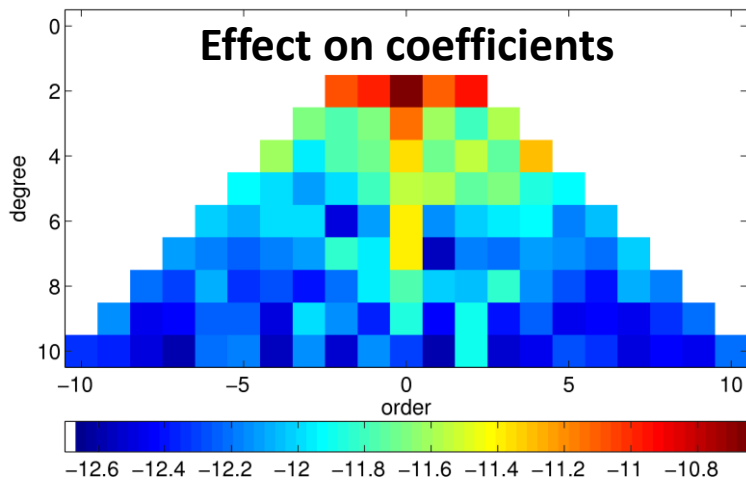


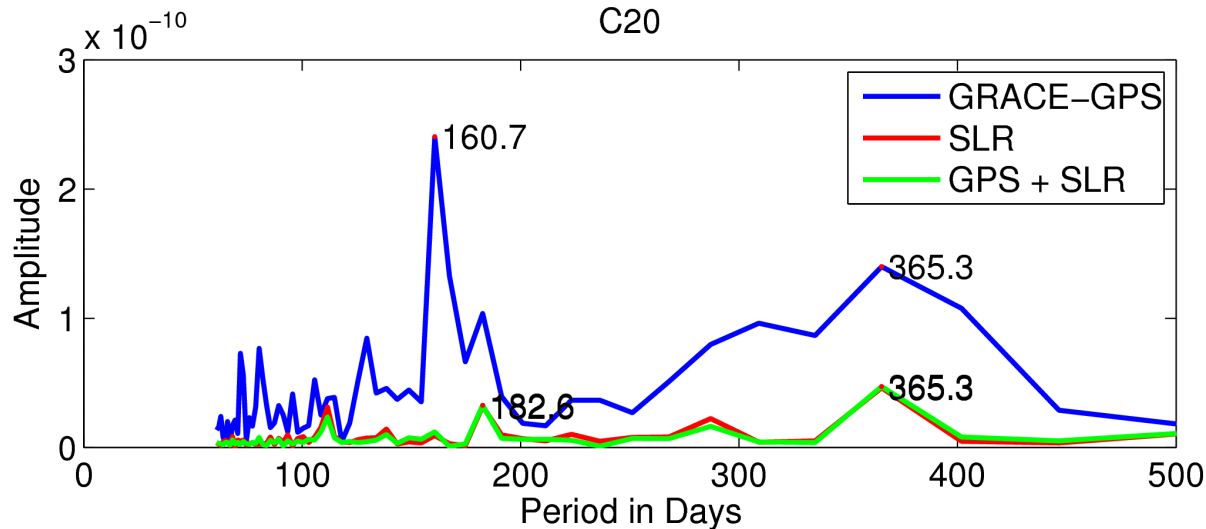
GRACE / SLR - Combination (1/2)

In AIUB $10^{-10} * \text{SLR} + \text{GRACE}$ combination SLR had some influence on degree 2, low degree sectorial and zonal coefficients.

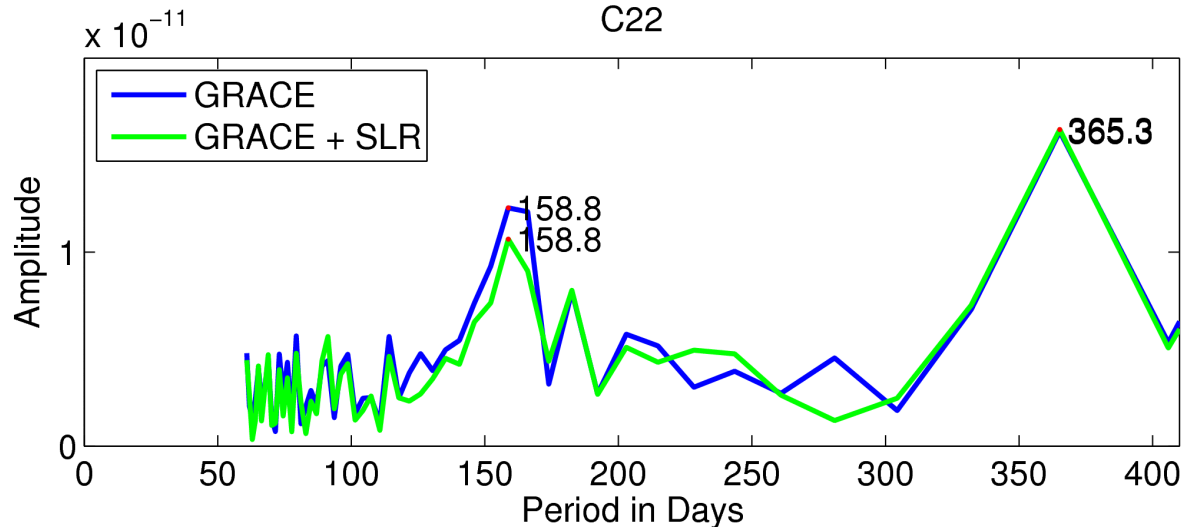
Main effects are a bias $dC_{20} = 2 * 10^{-10}$ and attenuation of 161 d-signal.



GRACE / SLR - Combination (2/2)



Attenuation of 161 d – signal is most pronounced in C20 (here in GRACE GPS + 0.01*SLR combination).



But it is also visible in other coefficients, e.g., C22 (in GRACE K-Band + 10^{-10} *SLR combination).